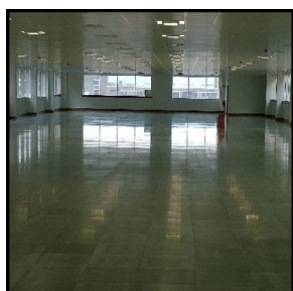
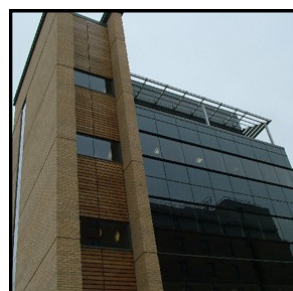
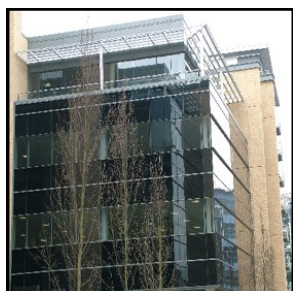


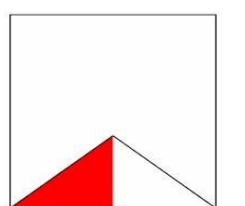
Project Profile



Project Title	Sweet Street Leeds
Client	HBG Properties
Project Value	£11m
Contract Conditions	Standard management contract terms
Duration	24months
BSCP Services	Full civil and structural engineering design and detailing

Description

The steel superstructure is a twin wing 4 and 5 storey solution giving spans, using composite cellform beams, of up to 16.5m. This creates uninterrupted floor plates of almost 10,500 ft² around the central core and atrium. The atrium glazing also called for innovation in the development of the first "suspended" use of the system, which is highly deflection critical.



BSCP
Part of the
gha livigunn group

Cheadle

0161 4914 600

Frodsham

01928 734777

Leeds

0113 261 0022

www.ghalivigunn.com