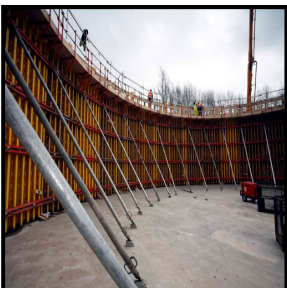


Project Profile



Project Title	Ashton WwTW
Client	KMI Plus/United Utilities
Project Value	£27m
Contract Conditions	UU AX4 bespoke
Duration	24 months
GHA Livigunn Services	Civil, Structural, Geotechnical Engineering and Architecture

Description

New build 45MLD wastewater treatment works comprising inlet works, primary treatment, secondary treatment ASP and sludge treatment GBT's.

The existing works was refurbished to provide 9100m³ of storm water storage and eliminate to construct 4 new CSO's and an additional 15000m³ of detention tanks in the upstream network.

The civil design incorporated a number of innovative solutions including an elegant propped cantilever ASP wall design using stainless steel tie bars, segmental shaft construction for the primary tanks and the use of PRV's to reduce flotation forces on the final settlement tanks.

The site was bounded by an elevated embankment that carried the peak forest canal and slope stability assessments identified the need for a sheet piled a retaining wall prior top excavation.